

Sycamore Canyon
DENISE



Elevation A

Approx. square feet: 2,350

Stories: 1

Bedrooms: 3 - 5

Garage: 2- to 3-car

Plan Number: T23D

The ranch-style Denise features an open layout with stylish design options. Enjoy the perfect retreat in a master bedroom with a private bath and walk-in closet. And take advantage of extra storage space in the garage and additional entertaining space in the teen room connecting the two front-facing bedrooms.

Available elevations:



Elevation A



Elevation B - Shown with optional stone



Elevation C - Shown with optional stone



Elevation D - Shown with optional stone

COMMUNITY LOCATION

16938 South Eva Avenue
Vail, AZ 85641
520-498-4155

HOME GALLERY

3091 West Ina Road
Tucson, AZ 85741
877-346-8102

COMMUNITY LOCATION

16938 South Eva Avenue
Vail, AZ 85641
520-498-4155

HOME GALLERY

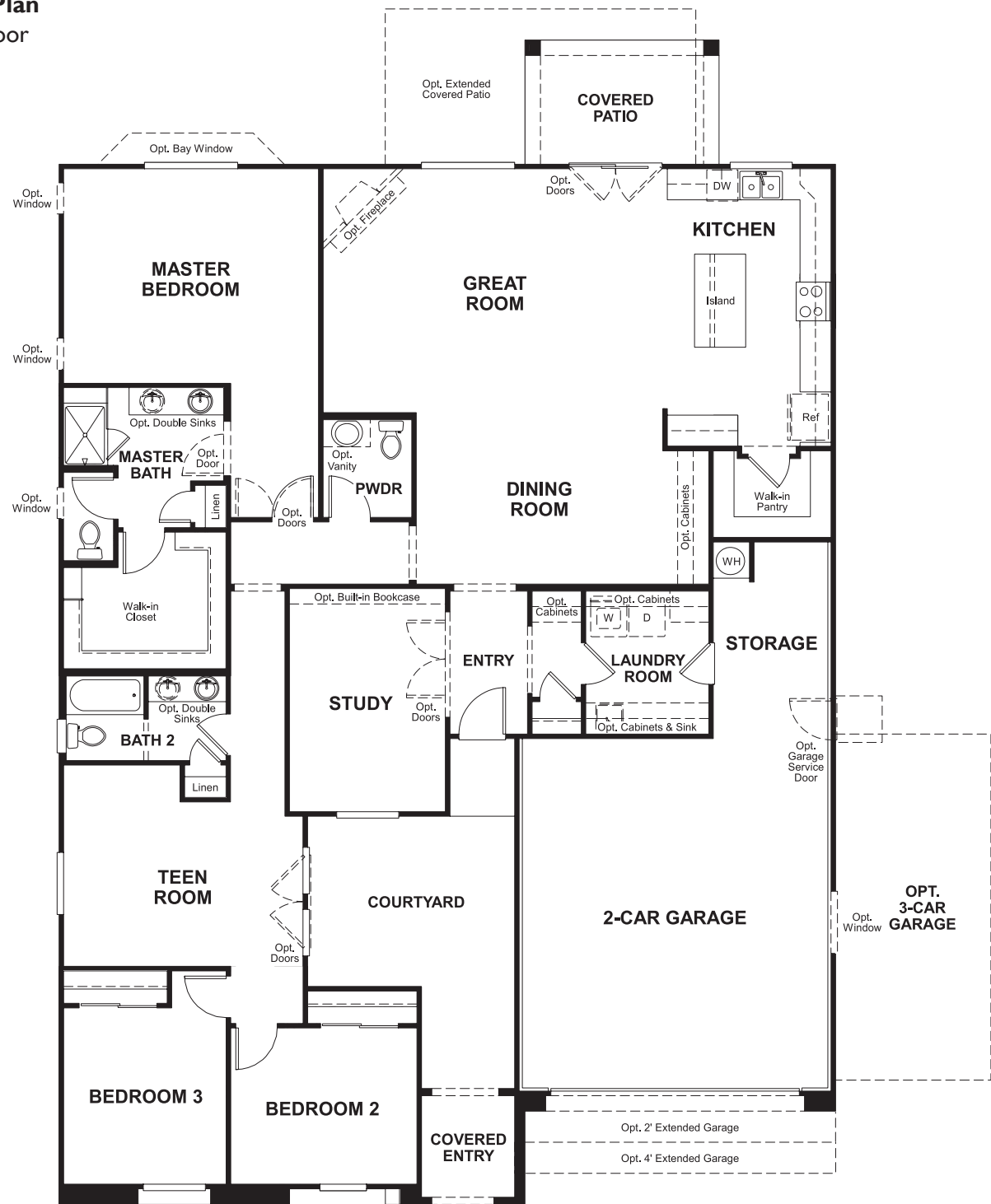
3091 West Ina Road
Tucson, AZ 85741
877-346-8102

Sycamore Canyon
DENISE

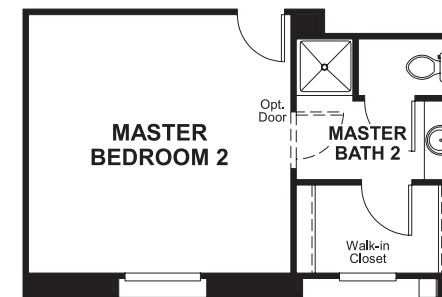
Approx. square feet: 2,350
Stories: 1
Bedrooms: 3 - 5

Garage: 2- to 3-car
Plan Number: T23D

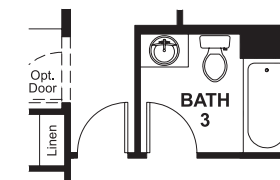
Floor Plan
Main Floor



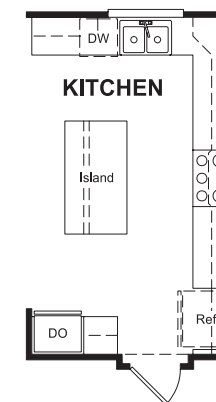
Floor Plan
Main Floor Options



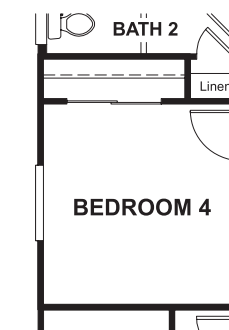
OPT. DELUXE MASTER BEDROOM 2



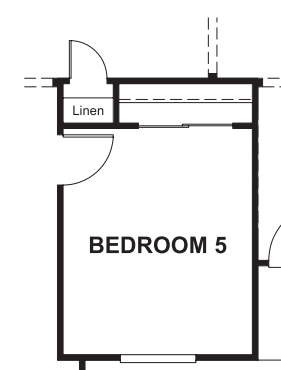
OPT. BATH 3



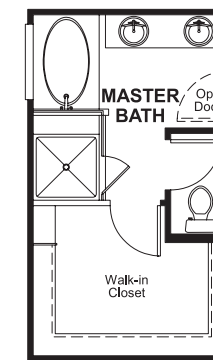
OPT. GOURMET KITCHEN



OPT. BEDROOM 4



OPT. BEDROOM 5



OPT. DELUXE MASTER BATH

THIS PLAN'S PROJECTED HERS® INDEX = 68*
Projected Rating Based on Plans – Field Confirmation Required

How does this floor plan rate?
Take a look: **100** = Standard new home* **130** = Typical resale home**
The lower the number, the better! Refer to the RESNET® HERS index brochure or go to www.RESNET.us for details.

What's a HERS® Index? HERS stands for Home Energy Rating System, a system created by RESNET® to measure home energy efficiency.[^]
A Projected HERS index or rating is a computer simulation performed prior to construction by a third-party HERS rater using RESNET-accredited rating software, rated feature and specification data derived from home plans, features and specifications, and other data selected or assumed by the rater. The projected HERS index is approximate and is subject to change without notice. Actual results will vary.

*This information is presented for education purposes only. The HERS index for a confirmed rating will be determined by a third-party HERS rater based on data gathered from on-site observations and, if required, testing of rated features for a home as featured, optioned, located, oriented and/or built.
+Standard new home is based on the RESNET® Reference Home definition with a HERS® index of 100 (based on the 2006 International Energy Conservation Code).
**Typical resale home is based on the U.S. Department of Energy definition with a HERS® index of 130.

[^]RESNET® has developed the HERS® index to indicate the comparative efficiencies of homes. It is no guarantee that energy efficiencies will be achieved.